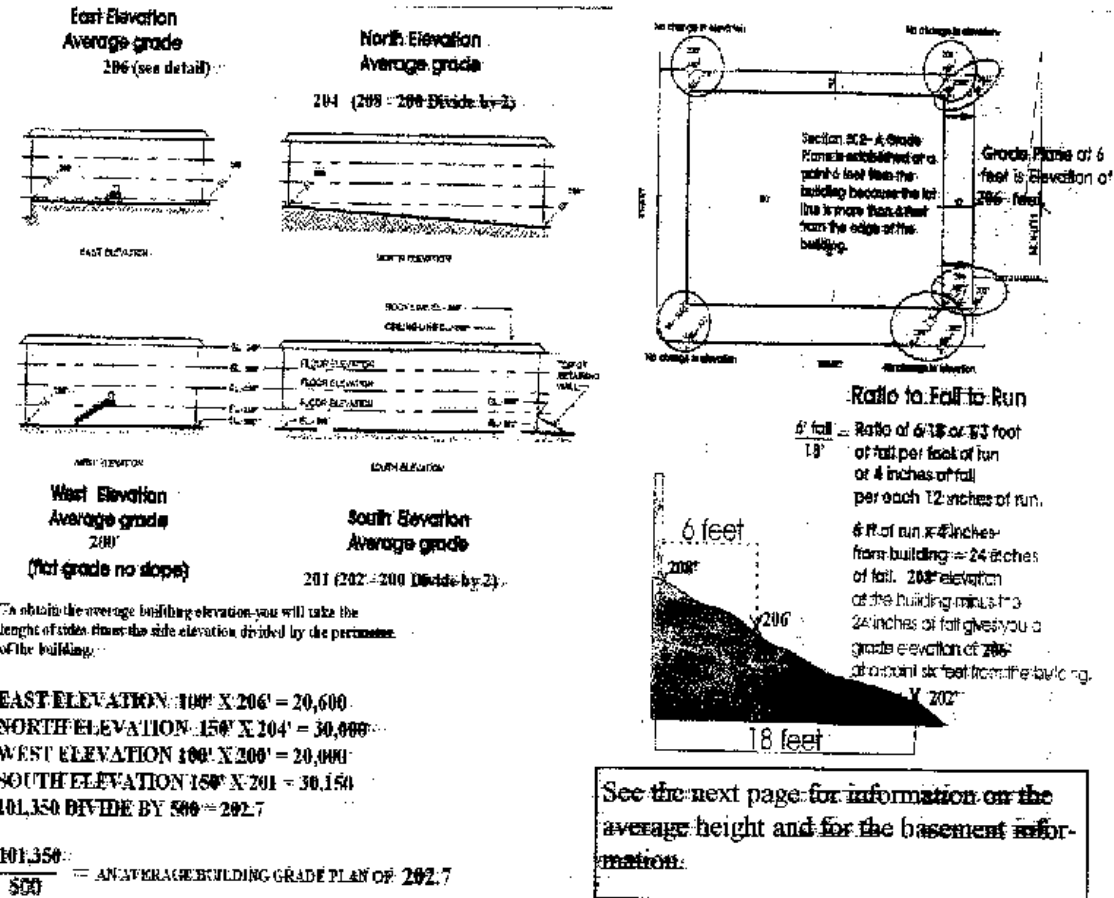


Mecklenburg County Common Code Defects

IBC CHAPTER 5 FOR BUILDING HEIGHT

How do I determine my height of a building by using grade plan ?

The calculation below is to determine the average grade of the building. This is required to be able to determine the height in feet of the building. By definition, height of a building is: The vertical distance from grade plane to the average height of the highest roof surface.



Disclaimer: There may be other ways to comply with the Code. If so, you are not required to use this method to comply with the Code. You may want to investigate other options, or consult with a design professional identifying an equally code compliant solution.

End Notes

North Carolina State Building Code
 Commercial Code 2002 Edition
 Publication Date: September 2001
 Copyright 2001 by International Code Council
 Published in cooperation with:
 Southern Building Code Congress International, Inc. (SBCCI)