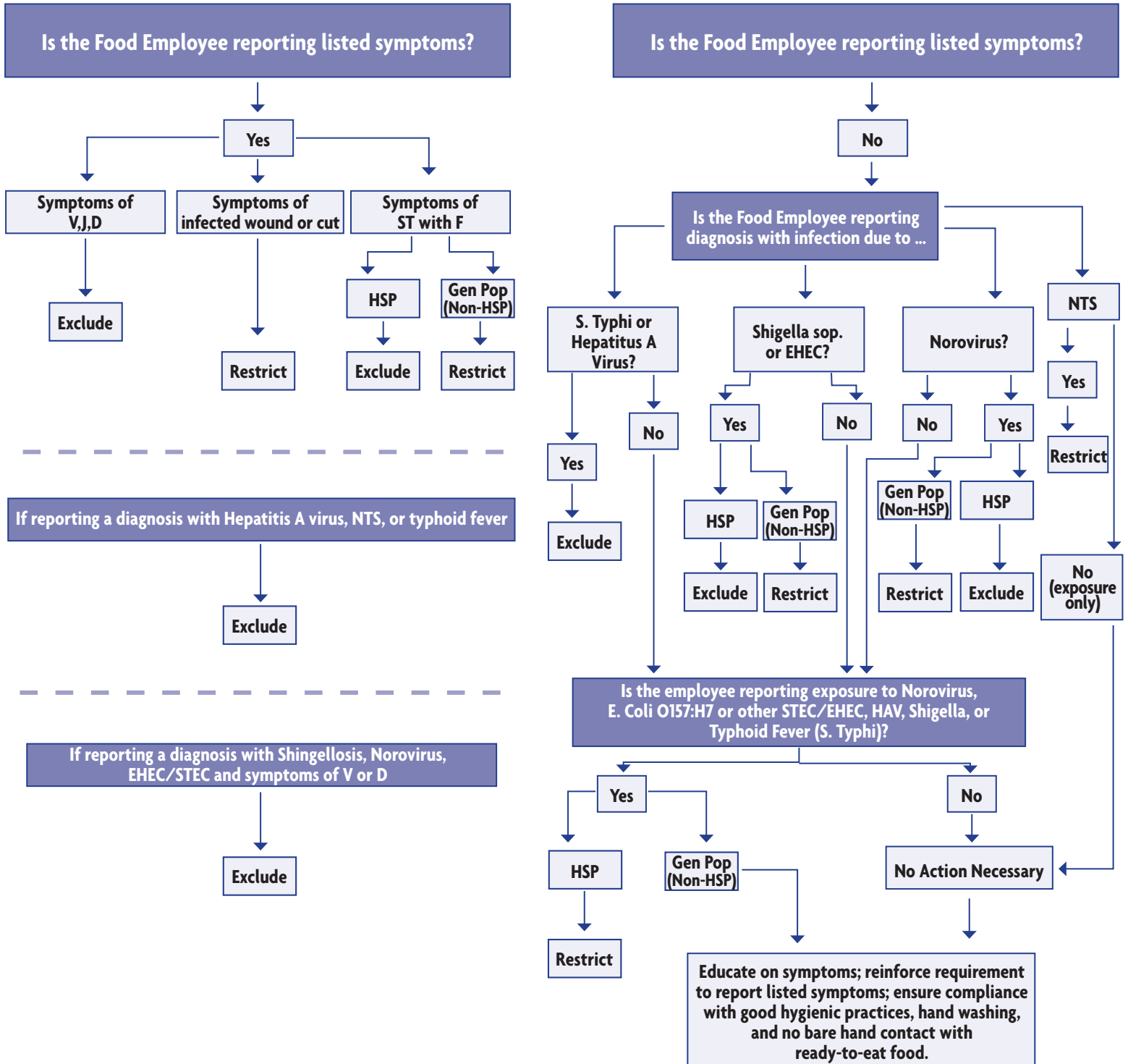




EMPLOYEE HEALTH DECISION TREE



PEOPLE · PRIDE · PROGRESS · PARTNERSHIPS

Environmental Health Division • 700 N. Tryon Street, Suite 208 • Charlotte, NC 28202-2222 • 980-314-1620 • <http://envhealth.charmeck.org>

2-201.11/2-201.12 Decision Tree 1 and 2

Key: (HSP) Highly Susceptible Population; (Gen. Pop.) General Population; (V) Vomiting; (J) Jaundice; (D) Diarrhea; (ST with F) Sore Throat with Fever ; (EHEC) Enterohemorrhagic E. coli; (STEC) Shiga toxin - producing E. Coli; (HAV) Hepatitis A Virus. (NTS) = Nontyphoidal Salmonella

Additional information can be found in Annex 3 of the 2013 FDA Food Code (2-201.11/2-201.12)