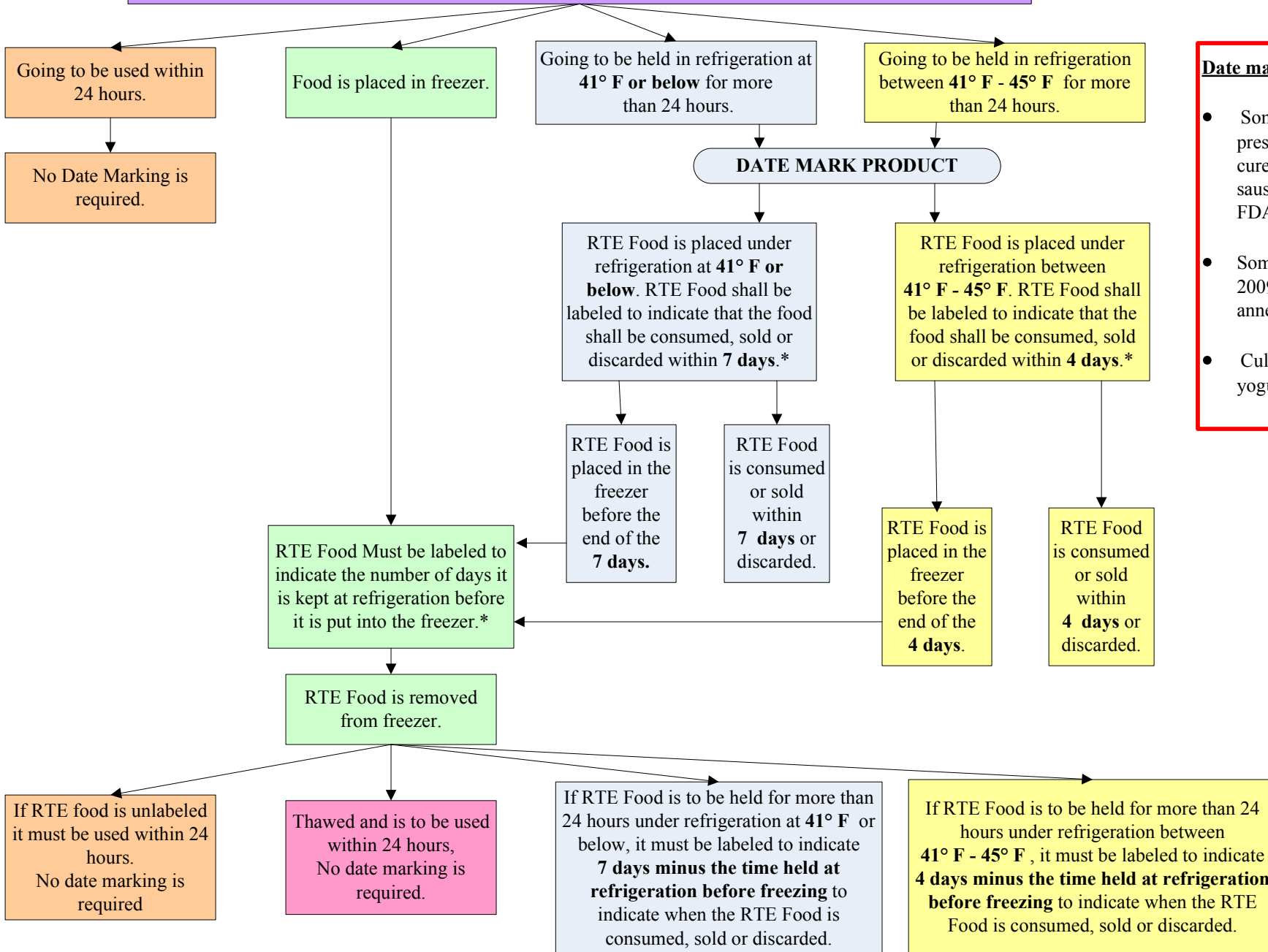


Date Marking Guidelines

* Time starts with the day of preparation
OR
The day the container is opened.

POTENTIALLY HAZARDOUS, READY-TO-EAT (RTE) FOODS Prepared in a Food Establishment
OR
Commercially Prepared in a Food Processing Plant and opened at the Food Establishment



Date marking exemptions:

- Some deli salads, preserved fish, salt-cured products, sausage (pg. 87 2009 FDA Food Code)
- Some cheese (pg. 417 2009 FDA Food Code annex)
- Cultured dairy (e.g. yogurt, sour cream)