

Health Disparity Indicators for Mecklenburg County Residents, 2007

Mortality - Deaths within a population and often used as a measure of health status for a population.

Leading Causes of Death by Race 2007 Mecklenburg County

Whites	Other Races
1) Cancer	1) Cancer
2) Heart Disease	2) Heart Disease
3) Alzheimer's Disease	3) Stroke
4) Stroke	4) Unintentional Injury
5) Unintentional Injury	5) Kidney Disease
6) COPD	6) HIV
7) Influenza & Pneumonia	7) Homicide
8) Diabetes	8) Diabetes
9) Kidney Disease	9) Alzheimer's Disease
10) Suicide	10) COPD

While the three leading causes of death are similar among all racial groups, people of other races often die at higher rates and younger ages than whites.

Cause-Specific Mortality: (Comparison of 2002-2006 5yr. Age-Adjusted Death Rates by Race for Minorities and Whites for Mecklenburg County)*.

- *Pancreatic Cancer*: Mortality rate for Minorities is **1.6** times the rate for Whites
- *Prostate Cancer*: Mortality rate for Minorities is **2.4** times the rate for Whites
- *Heart Disease*: Mortality rate for Minorities is **1.4** times the rate for Whites
- *Stroke*: Mortality rate for Minorities is **1.5** times the rate for Whites
- *Diabetes*: Mortality rate for Minorities is **2.7** times the rate for Whites
- *Kidney Disease*: Mortality Rate for Minorities is **2.7** times the rate for Whites
- *Homicide*: Mortality Rate for Minorities is **3.5** times the rate for Whites
- *HIV Disease*: Mortality rate is **12.4** times the rate for Whites

*Hispanics can be of any race so therefore they can be in both the numerator and denominator.

Source: NC DHHS/State Center for Health Statistics

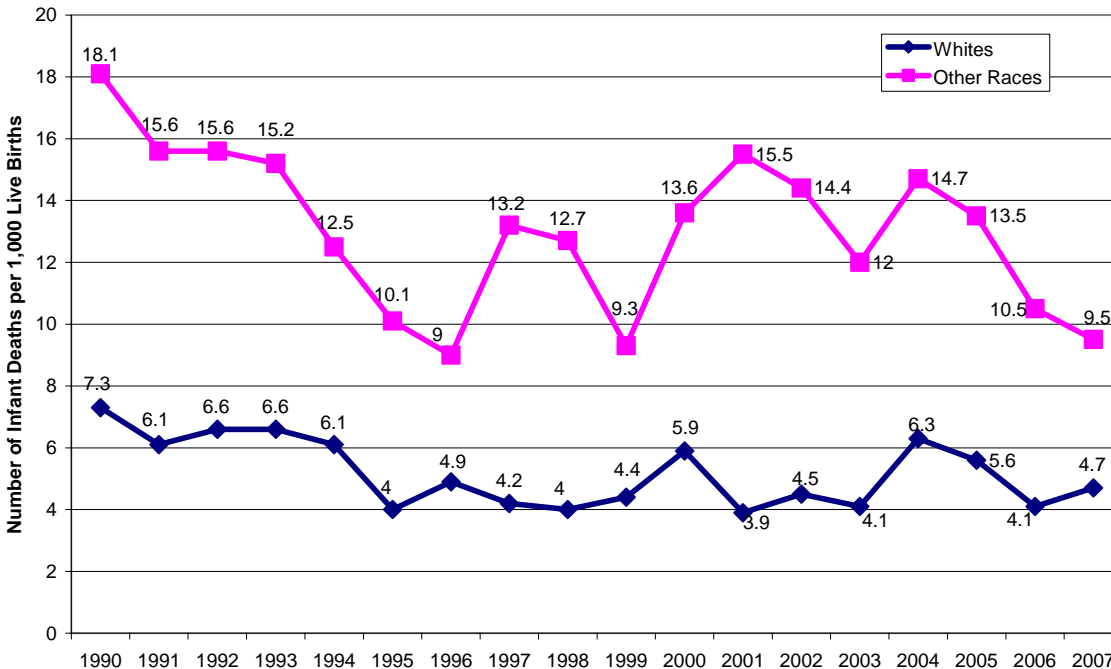
Infant Mortality Rate:

Infant Mortality Rate (IMR) – number of resident infant deaths per 1,000 resident live births for a particular year. The IMR represents the number of infants less than 1 year of age at risk of dying before the age of 1 year of all the infants born in a given time period or specific year.

- The 2007 Infant Mortality Rate for Mecklenburg County is **6.5**.
- In 2007, the IMR for Minorities was **9.5** and for Whites **4.7**.
- The IMR for Minority infants is **double** the rate for White infants.

Source: NC DHHS/State Center for Health Statistics

Annual Infant Mortality Rates per 1,000 Live Births by Race
Mecklenburg County, 1990 through 2007



Source: NC DHHS/State Center for Health Statistics
Prepared by the Mecklenburg County Health Department, Epidemiology Program, November 2007

Health Insurance Percentages for 2007 from the Behavioral Risk Factor Surveillance System (BRFSS) for Mecklenburg County:

- **17.7 %** of Mecklenburg County Residents reported having *no* health insurance coverage.
- **6.0%** of Whites reported having *no* health insurance coverage.
- **35.9 %** of Minorities reported having *no* health insurance coverage.
- **2007** data indicates the percentage of Minorities with *no* health insurance coverage is **5.9 times higher** than that of Whites.

Source: NC DHHS/State Center for Health Statistics. Prepared by the Mecklenburg County Health Department, Epidemiology Program, November 2008.

Visit www.meckhealth.org to learn more about local health statistics.