



## Reservations:

Campsites are available year-round on a first come, first serve basis, and **MUST** have a reservation and permit prior to setup.

Campsites must be reserved online in advance at least 48 hours prior to your arrival date. Reservations must be paid in full using a Visa, Mastercard, or Discover Debit or Credit Card. We no longer accept walk ins or day of reservations.

## Campground Rules:

Any violation of the following rules could result in removal from park property, permanent loss of reservation privileges, and/or criminal charges.

- Check-in is any time after 3:00pm and check-out is before 12:00pm. **NO EARLY CHECK-INS OR LATE CHECK-OUTS.**
- Early check in and Late Check out are not permitted. Early arrivals/late departures must be included in your reservation timeframe.
- Leisure camping only. Maximum of 14 days in a calendar month (See website for details)
- The Nature Preserve is not accessible after sunset.
- Pets must be on a leash no longer than 6ft. No pets are allowed in the Bath House. Must not harass or disturb wildlife or other guests.
- 6-person capacity per site. (See website for details)
- Alcoholic beverages, tobacco products, amplified music, drugs, firearms, fireworks, & generators are strictly prohibited.
- No swimming or wading allowed within preserve boundaries.
- The collection, removal, or disturbance of any natural or cultural object is prohibited. This includes the cutting of trees and plants for firewood.
- Campfires are permitted only in designated fire rings. **FIRE RINGS CANNOT BE MOVED.** Do not leave fires unattended. Fires must be fully extinguished when away from site and upon check-out. Mecklenburg County Park and Recreation Department reserves the right to ban campfires in unsafe conditions.
- Only one vehicle (separate or towed by an RV) is allowed at each site. There is overflow parking available.
- All vehicles and bikes must always stay on paved roads and parking lots. Trails are for foot traffic only.
- Quiet hours are from 10:00pm – 7:00am.
- Sites must be maintained in an orderly manner. Please dispose trash in the proper cans or dumpsters and do not leave bags next to the cans. To discourage raccoons and other animals, please store food inside vehicles, RVs, or a secure container.
- No fishing allowed after dark!

# CAMPING

ALL SITES INCLUDE PICNIC TABLE & FIRE RING w/ GRILL TOP  
Sites accommodate different size tents, campers, RV's and vans. Please be mindful of maximum length accommodations when reserving your site.



## RV Sites (R):

- No RVs over 38 feet
- Water & Electricity (50, 30, & 20 amp)
- RV Sites = R1-R13 (All sites are pull through)
- Full Hook Up R5 & R6 ONLY!!!

Mecklenburg County Resident = \$26.00/night

Non-County Resident = \$33.00/night



## Drive-To Sites w/ Tent Pad (D)

## & Drive-To Site w/ Deck (T):

- Parking at site (1 vehicle per site)
- Shared Water & Electricity D- Sites: (30 & 20 amp)
- Water & Electricity T- Sites: (20 amp ONLY!)
- Drive to Sites: D1-D26 and T1, T3
- Site's w/ Deck: T2, T4, T5, T6, T7

- Handicap accessible sites: D14, D15, T2

Mecklenburg County Resident = \$19.00/night

Non-County Resident = \$28.00/night



## Hammock Camping:

(1 Hammock Per Site)

D2, D6, D7, D9, D10, D11, D12, D13, D19, D21, D22, D23, D24, D26, T1, T6, T7, P6, P7



## Small Tear Drop Camper Sites

15ft or less (BACK IN SITES)

D5, D12, D14, D15, D20, D21, D22, D23, D25, D26



## Conversion Van Camping

D3, D5, D6, D7, D8, D10, D12, D13, D14, D15, D16, D17, D19, D20, D21, D22, D25, D26, T2, T6, T7



## Primitive Sites (P):

- Must hike gear to site
- P Sites = P1-P10

Mecklenburg County Resident = \$15.00/night

Non-County Resident = \$19.00/night



- Firewood \$5
- Ice \$2
- Fire Starters: \$1
- Magic Flames: \$3
- Leveling Blocks: \$40



# Mecklenburg County Park and Recreation

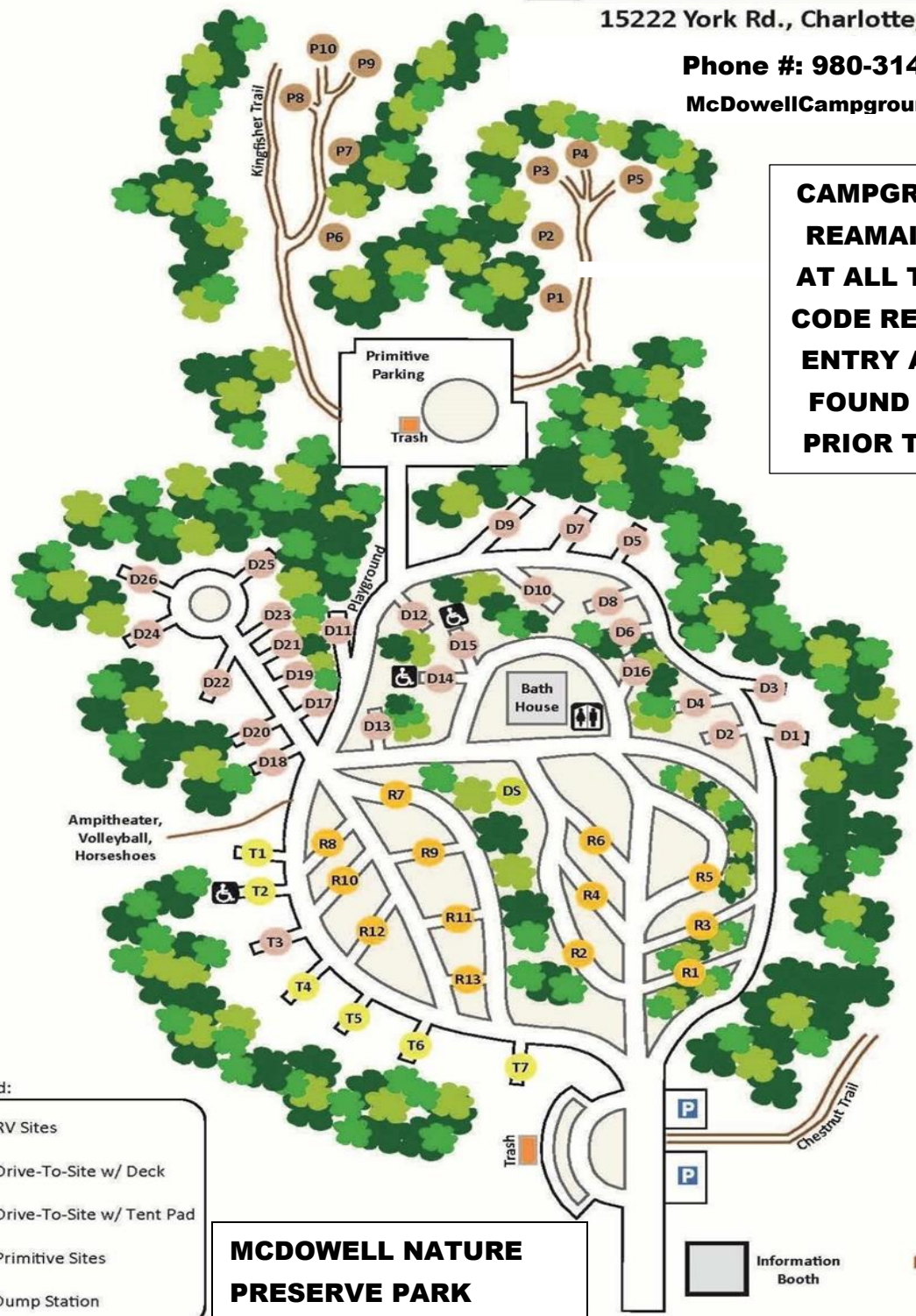
## McDowell Nature Preserve Campground

15222 York Rd., Charlotte, NC 28278

Phone #: 980-314-2267

McDowellCampground@MeckNC.Gov

**CAMPGROUND GATE  
REMAINS CLOSED  
AT ALL TIMES. GATE  
CODE REQUIRED FOR  
ENTRY AND CAN BE  
FOUND ON PERMIT  
PRIOR TO ARRIVAL.**



All RV sites  
require leveling  
materials

Legend:

- RV Sites
- Drive-To-Site w/ Deck
- Drive-To-Site w/ Tent Pad
- Primitive Sites
- DS Dump Station

**MCDOWELL NATURE  
PRESERVE PARK  
HOURS: 7AM- SUNSET**



\*\*This map is a representation\*\*  
Mecklenburg County GIS, Scott B., June 29, 2018