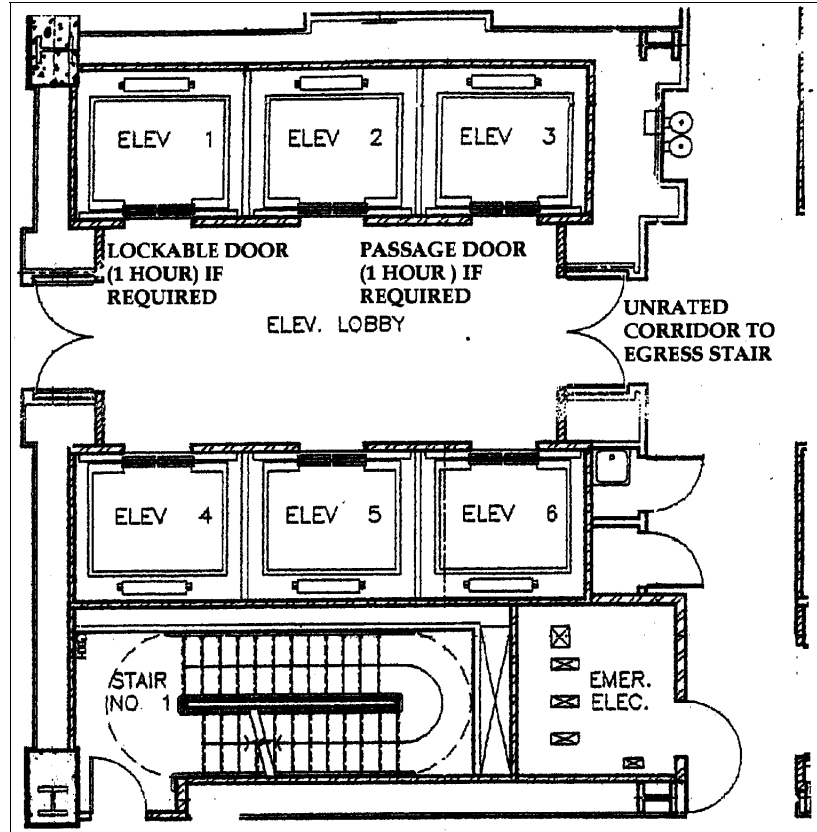


Mecklenburg County Common Code Defects



- 75 FEET MAXIMUM TRAVEL DISTANCES FROM THE MOST REMOTE POINT OF THE LOBBY.
- 20 FEET MAXIMUM DEAD END TRAVEL DISTANCE TO STAIR DOOR WITH IN THE EXIT ACCESS CORRIDOR. IF THE BUILDING IS SPRINKLED THAN THE TRAVEL DISTANCE CAN BE INCREASE IN CERTAIN OCCUPANCYS.

Disclaimer: *There may be other ways to comply with the Code. If so, you are not required to use this method to comply with the Code. You may want to investigate other options, or consult with a design professional identifying an equally code compliant solution.*

End Notes
North Carolina State Building Code
Commercial Code 2002 Edition

Publication Date: September 2001
Copyright 2001 by International Code Council
Published in cooperation with:
Southern Building Code Congress International, Inc. (SBCCI)