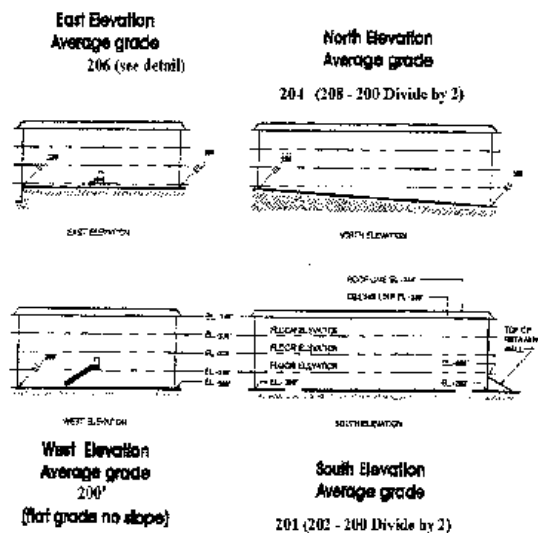


Mecklenburg County Common Code Defects

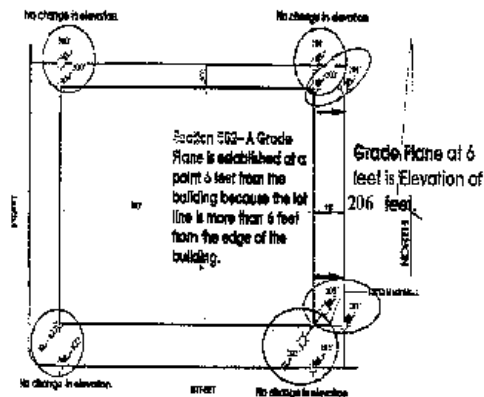
GRADE PLANE



To obtain the average building elevation you will take the length of sides times the side elevation divided by the perimeter of the building.

EAST ELEVATION 104' X 206' = 20,600
 NORTH ELEVATION 150' X 204' = 30,600
 WEST ELEVATION 100' X 200' = 20,000
 SOUTH ELEVATION 150' X 201' = 30,150
 101,350 DIVIDE BY 500 = 202.7

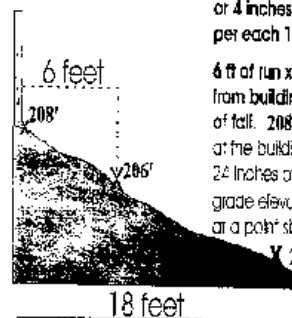
$\frac{101,350}{500} =$ AN AVERAGE BUILDING GRADE PLAN OF 202.7



Ratio to Fall to Run

$\frac{6' \text{ fall}}{18'} =$ Ratio of $\frac{6}{18}$ or $\frac{1}{3}$ foot of fall per foot of run or 4 inches of fall per each 12 inches of run.

6 ft of run x 4 inches of fall = 24 inches of fall. 208' elevation at the building minus the 24 inches of fall gives you a grade elevation of 206' at a point six feet from the building. X 202'



The calculation above were to determine the average grade of the building. This is required to be able to determine the height in feet of the building. By definition, height of a building is: The vertical distance from grade plane to the average height of the highest roof surface.