

Common Code Defects

Common Paths of Egress Travel

Code Defects

Common Path of Egress Travel

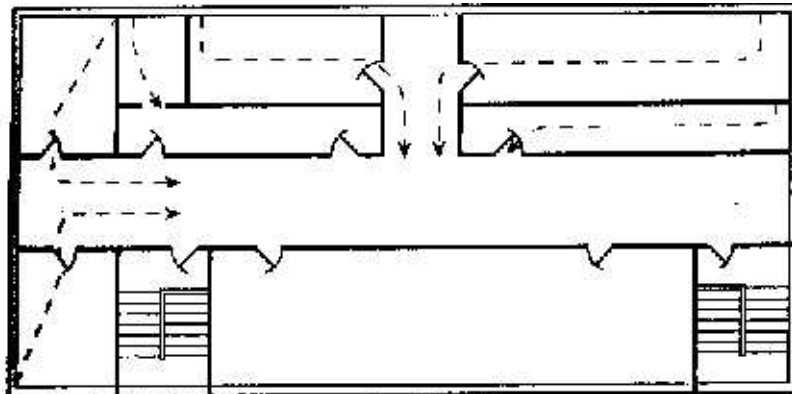
Code Description

1004.2.5 Common path of egress travel

In occupancies other than Groups H-1, H-2 and H-3, the common path of egress travel shall not exceed 75 feet (22 860 mm). In occupancies in Groups H-1, H-2, and H-3 the common path of egress travel shall not exceed 25 feet (7620 mm).

Exceptions:

1. The length of a common path of egress travel in an occupancy in Groups B, F and S shall not be more than 100 feet (30 480 mm), provided that the building is equipped throughout with an automatic sprinkler system installed in accordance with Section 903.3.1.1.
2. Where a tenant space in an occupancy in Groups G, S and U has a n occupant load of not more than 30, the length of a common path of egress travel shall not be more than 100 feet (30 480 mm).
3. The length of a common path of egress travel in occupancies in Group 1-3 shall not be more than 100 feet (30 480 mm).



Occupants are steered in only one direction before reaching a point at which travel in independent directions becomes possible. Common path of travel could exist only within rooms and occupied spaces or it may exist within the combination of room space and corridors.