

A Snapshot

Health Care Access In Mecklenburg County

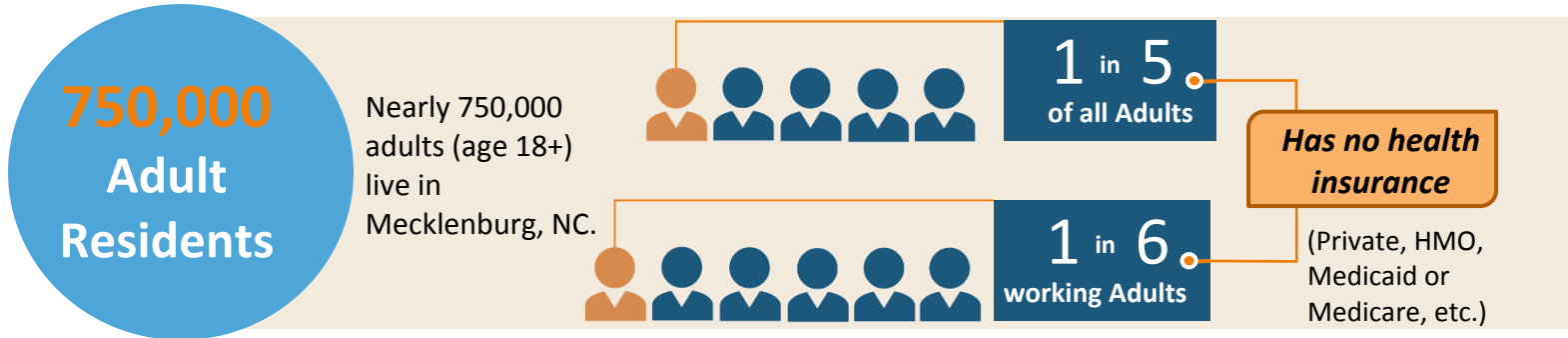


from the
2014 Local Behavior Risk
Factor Surveillance System
(BRFSS) Report

A special report from the Mecklenburg County Health Department, Epidemiology Program

August 2015

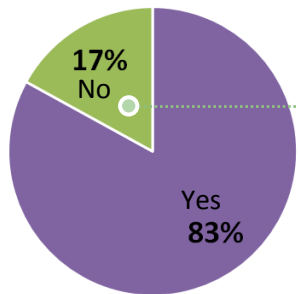
Health insurance coverage is strongly linked with better health outcomes. Uninsured residents are less likely to have a regular source of health care or a recent health care visit than persons with health insurance.



Access to Care

% of Mecklenburg Adults with a Personal Doctor

Persons without a regular source for care are more likely to report delays in preventive care and services which may result in increased illness and deaths.

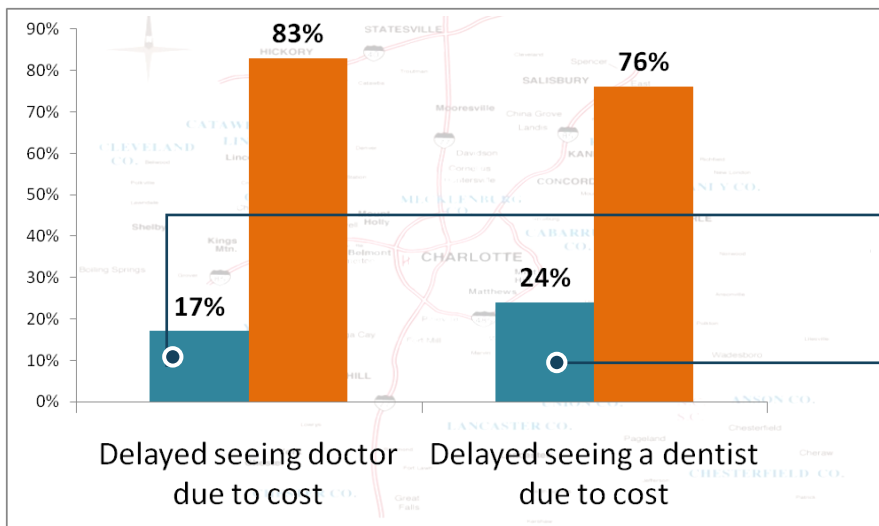


126,700 Adults do not have a personal doctor



25% of men report not having a doctor, compared to 10% of women

% of Mecklenburg Adults Delaying Care due to Cost



Despite the benefits of preventive care, too many people go without, often due to cost. Even persons with insurance may delay care due to copayments and deductibles.

- Nearly **130,000** residents did not see a doctor due to cost.
- Over **178,000** residents delayed seeing a dentist due to cost.

Health Disparities

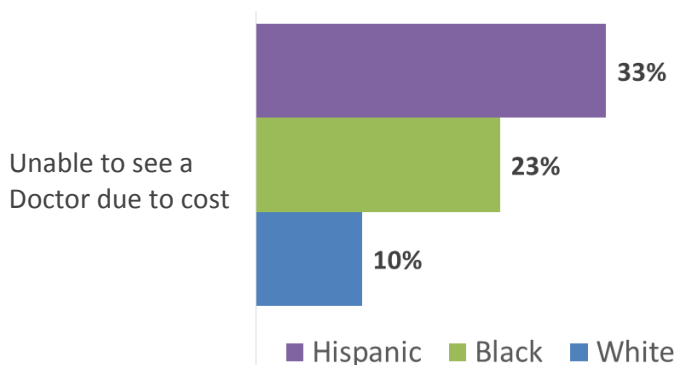
Health Disparities are preventable differences in disease, injury and opportunities to achieve optimal health. Race or ethnicity, sex, age, disability, socioeconomic status & location all contribute to a person's ability to achieve good health.

Disparities by Race and Ethnicity

Racial and ethnic minority groups are more likely than non-Hispanic Whites to be uninsured and are more likely to delay care due to cost placing these groups at increased risk for illness and premature deaths.

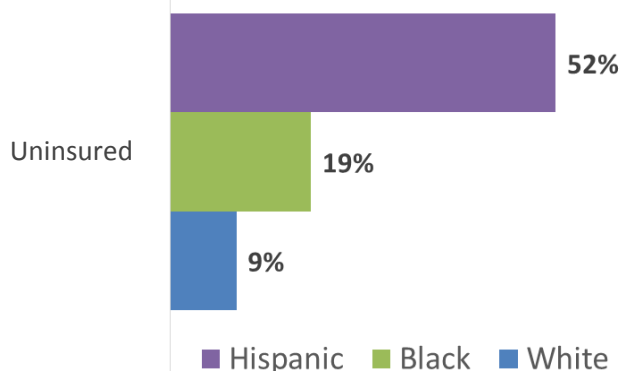
Needed to see a doctor but could not due to cost

Mecklenburg County Adults by Race/Ethnicity



Health Insurance Coverage

Mecklenburg County Adults by Race/Ethnicity



Compared to Whites, Blacks were 2.3 times and Hispanics were 3.3 times more likely to delay seeing a doctor due to cost.*

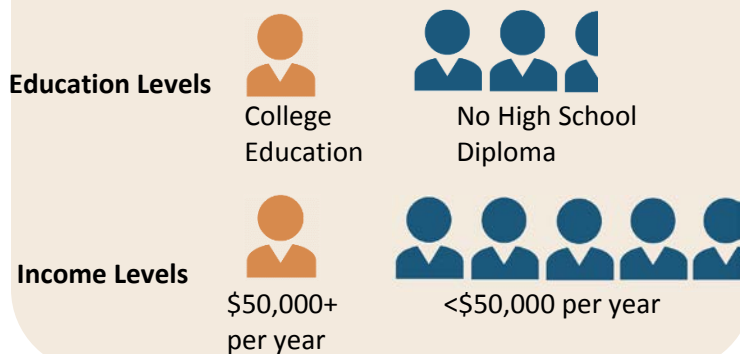
Compared to Whites, Blacks were 2.1 times and Hispanics were 5.8 times more likely to have no health insurance.*

* Differences are statistically significant and not likely due to chance.

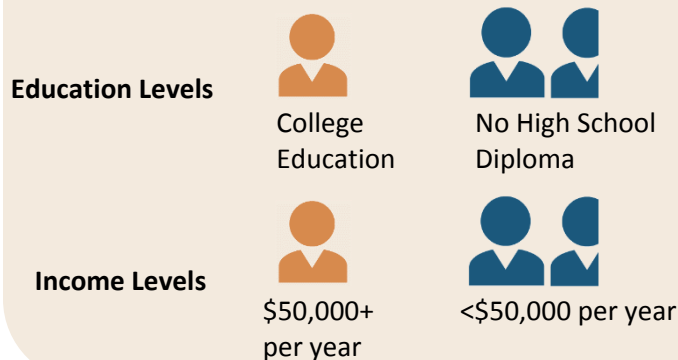
Disparities by Income and Education

People with higher levels of education and income have higher rates health insurance coverage and are more likely to have a usual source of care compared to those with less education and lower income levels.

Adults Unable to see Doctor Due to Cost By Education and Income



Uninsured Adults in Mecklenburg County By Education and Income



For More Information, contact:

Charisse Jenkins, MSPH
Mecklenburg County Health Department
249 Billingsley Road
Charlotte NC 28211
Charisse.Jenkins@mecklenburgcountync.gov