

resources

Department of
Corrections

704-353-2100

McLeod / TASC

(Substance Abuse)

704-332-9001

Suicide Hotline

704-444-2400

800-418-2065

Spanish Intakes

(En Espanol)

704-336-4569

r e a c h

(Reaching to Educate Adolescents @

Choices & Healthy relationships)

704-336-3210

NOVA

(Administrative offices)

704-336-4344

How can I contact NOVA?

For an assessment,
please come to the
Mecklenburg County Courthouse
Building, Room 4000.

Monday through Friday

or call:

704-336-4344

The NOVA office is open

Monday - Thursday

8:00 AM to 5:00 PM

Friday

8:00 AM - 4:00 PM

Classes are held

Tuesdays

6:00 PM - 8:00 PM

Thursdays

9:00 AM - 11:00 AM

6:00 PM - 8:00 PM

including parenting class

Saturdays

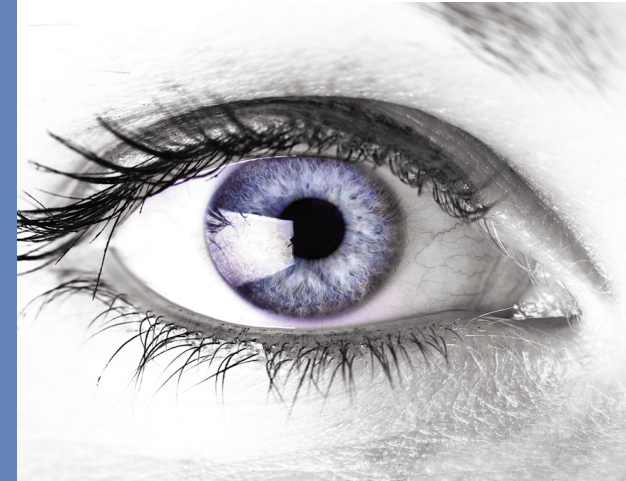
10:00 AM - 12:00 Noon

Mecklenburg County
Community Support Services
Women's Commission

2732 Rozzells Ferry Road
Charlotte, NC 28208



Mecklenburg County
Community Support Services
Women's Commission
Domestic Violence Division



NOVA

New Options For Violent Actions

Batterers' Intervention Program

COURT OFFICE:

Mecklenburg County Courthouse

832 East Fourth Street

Room 4000

Charlotte, NC 28202

ADMINISTRATIVE OFFICE:

2732 Rozzells Ferry Road

Charlotte, NC 28208

704-336-4344

NOVA participants are adults
18 years of age and older.

NOVA participants are
referred from court,
Department of Social Services
and other Human Services providers.

NOVA participants are initially
screened, then attend orientation
before attending a two hour class
once a week for 26 weeks.

NOVA groups are
all men, all female or
male Spanish speaking clients.

NOVA utilizes the
widely acclaimed Duluth & ADA
(Alternatives to Domestic Aggression)
curriculums.

NOVA participants are expected
to contribute to the group
and are guided by both a male
and female facilitator.

COST

Orientation is \$32.

Weekly fee is \$16.

All fees must be paid in full
prior to program completion.

NOVA

is a state certified batterer's
intervention program that
is a service of
Mecklenburg County.

We are dedicated to ending
violence between intimate
partners in our community by
initiating change in abusers'
behavior and exploring
non-controlling and
non-violent ways of relating.

**New Options for
Violent Actions**

Call us!

704-336-4344

did you know?

More than
4 in every 10
incidents of domestic violence
involves non-married persons
Bureau of Justice Special Report: Intimate
Partner Violence, May 2000

30% of the women
between ages 15 and 19
murdered each year
were **killed** by
their husband or boyfriend
City of New York Teen Relationship Abuse
Fact Sheet, March 1998

A child's exposure
to the father abusing
the mother is the **strongest
risk factor** for transmitting
violent behavior from one
generation to the next
American Psychological Association. 1996